

# Slab Building Design

# Vocabulary

- **Slab building**: Building a form by joining sections that have been cut from sheets of damp clay.
- **Relief Sculpture**: to give the impression that the sculpted material has been raised above the background plane.
- A **bas-relief** or **low relief** is a projecting image with a shallow overall depth. Example: coins
- **High relief** is where in general more than half the mass of the sculpted figure projects from the background.

# Elements

## Shape:

- an *enclosed space*
- **Geometric**: have clear edges one achieves when using tools to create them.
- **Organic**:

## Value:

- lightness or darkness of a color.
- **Value range**: the range of grays from white to black
- **Color Value**: showing the shades and tints of one color.

# Principles

## Harmony and Unity

- all of the elements of a piece combine to make a balanced, harmonious, complete *whole work of art*.
- composition with similar elements.

## Balance

- The way in which the elements (lines, shapes, colors, textures, etc.) of a piece are arranged.
- Visually weighs the same on both sides of a piece.
- **Symmetrical**-same on both sides.
- **Asymmetrical**-not the same but still balanced.

# Relief Sculptures

**Bas-Relief or Low-Relief**

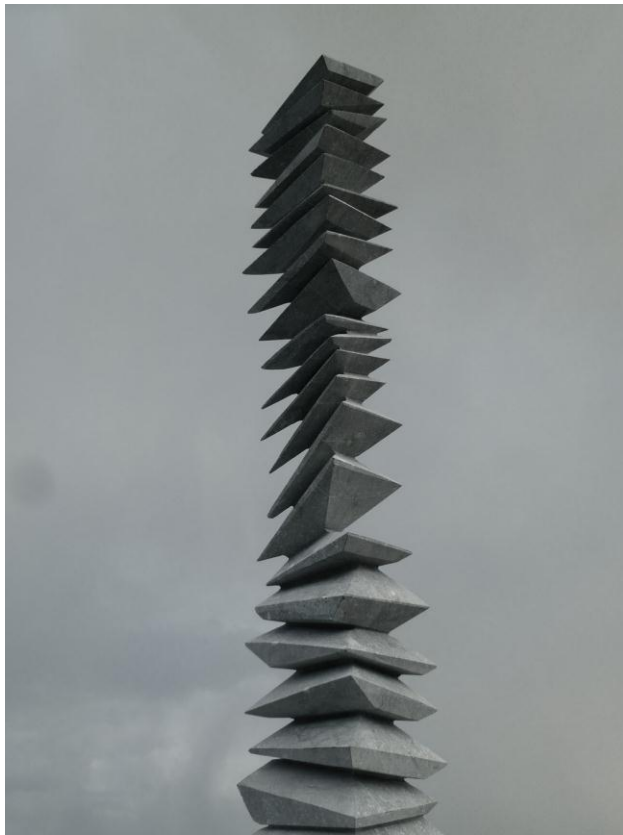


**High Relief**



# Principles in sculpture

## Harmony and Unity



# Balance

## Symmetrical



## Asymmetrical



# Slab Building and Ideas!





# Functional



# Flat Relief Sculpture





# Geometric



# Geometric

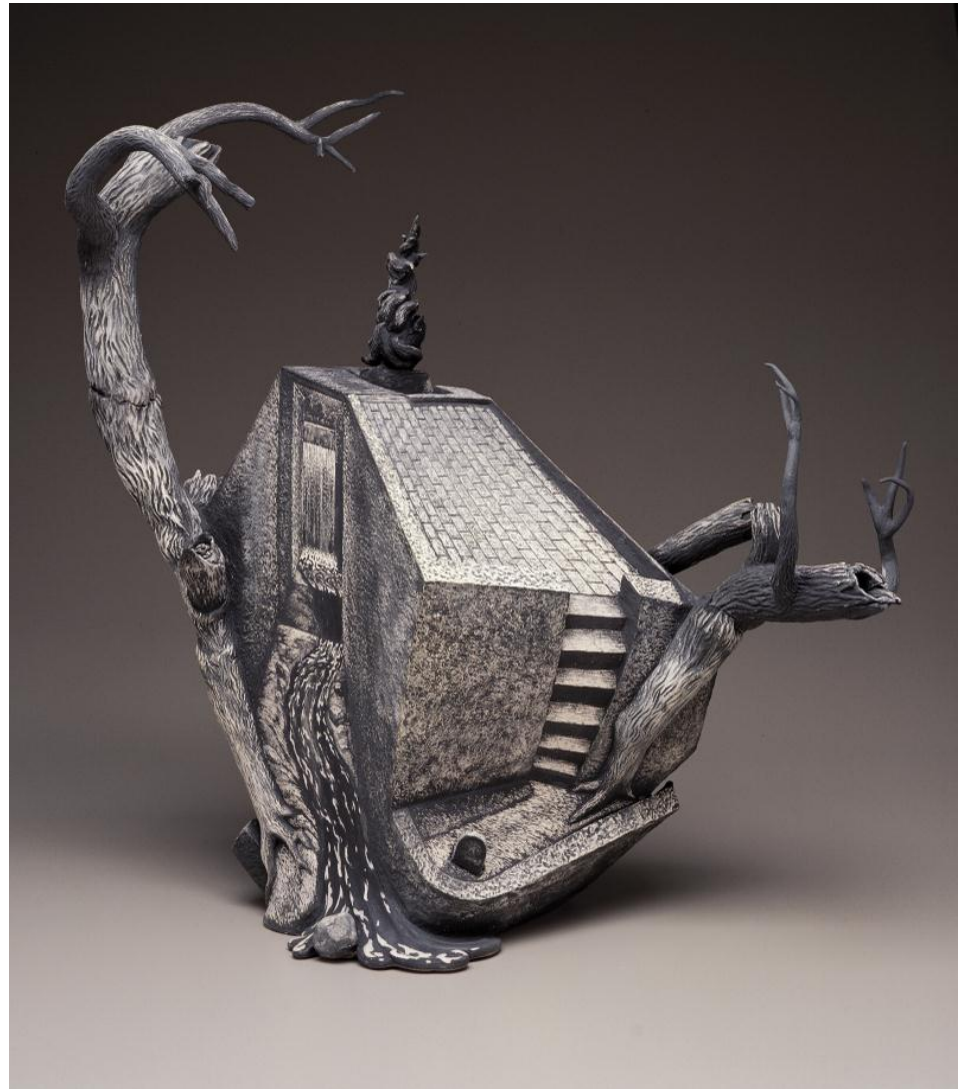


# Organic





# Organic and Geometric



**Clay pieces need to be somewhat leather-hard before you attach them.**



This helps the structure stay together.

You may choose to combine slab building with pinch or coil techniques!





# When you finish your coil design:

- Once again, start sketching out ideas for your slab design.
- Start with these questions:
  - Do I want to do a relief sculpture or do I want to build a slab structure? Or attach a relief to a structure?
  - Do I want it to be organic or geometric?
  - Symmetrical or Asymmetrical?
  - Functional or sculptural?

**This will be a grade!**